



JAMES  
ANDERSON



## TO LET

Upper Richmond Road West, East Sheen, SW14

**£1,100 Per Month**

Per Month

A spacious studio apartment in a central location in East Sheen. The property benefits from double glazing throughout, a large living space with kitchenette and a separate shower and basin. The property shares a W/C. Conveniently located on the Upper Richmond Road West, this apartment is ideally located for all the shops, bars and restaurants East Sheen has to offer. Transport links include Barnes and Mortlake Train Station and easy access to both Richmond Park and the A3.



Studio Apartment



Private En-Suite



Part Furnished



Open Plan Kitchen / Living



EPC Rating E | Council Tax C | Deposit £1269.23



Mortlake Train Station



East Sheen Primary School



Close to Richmond Park



Well Kept Communal Areas

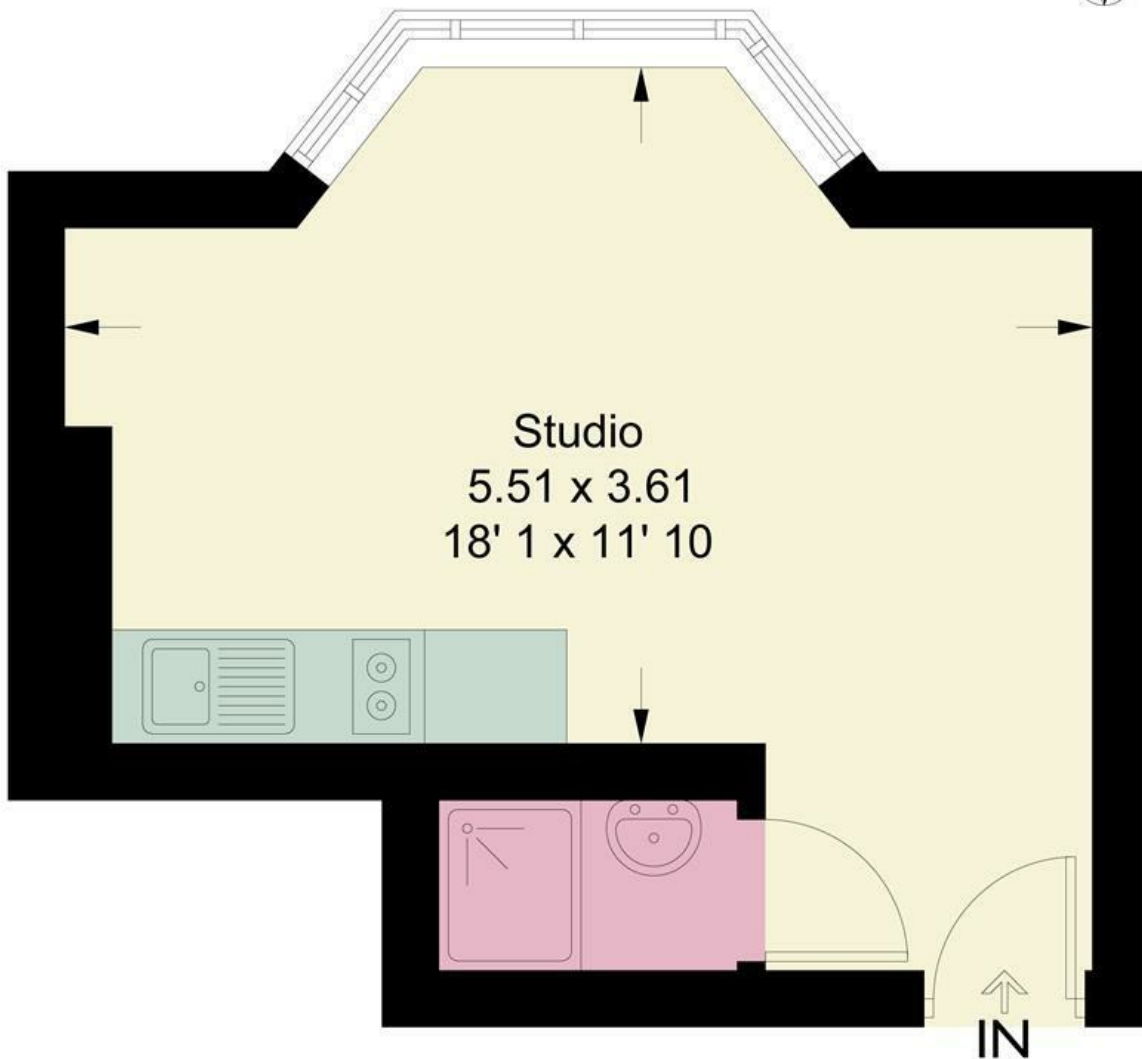


Holding Deposit £253.84 | Minimum Term 12 Months



OPEN 7 DAYS A WEEK • Weekdays until 9pm • Weekends until 5pm

0208 876 6611



## First Floor

This plan is not to scale and must be used as layout guidance only. All measurements and areas are approximate and should not be relied upon to provide accurate information. This plan must not be relied upon when making property valuations, design considerations or any other such relevant decisions. We accept no responsibility or liability (whether in contract, tort or otherwise) in relation to any loss whatsoever arising from or in connection with any use of this plan or the adequacy, accuracy or completeness of it or any information within it.



Energy Efficiency Rating		
	Current	Potential
Very energy efficient - lower running costs		
(92 plus) A		
(81-91) B		
(69-80) C		
(55-68) D		
(39-54) E		
(21-38) F		
(1-20) G		
Not energy efficient - higher running costs		
	42	72
England & Wales	EU Directive 2002/91/EC	

Environmental Impact (CO <sub>2</sub> ) Rating		
	Current	Potential
Very environmentally friendly - lower CO <sub>2</sub> emissions		
(92 plus) A		
(81-91) B		
(69-80) C		
(55-68) D		
(39-54) E		
(21-38) F		
(1-20) G		
Not environmentally friendly - higher CO <sub>2</sub> emissions		
England & Wales	EU Directive 2002/91/EC	

